

Num	PAGE
01	01_Title.SchDoc
02	02_CONNECTOR&EXT.SchDoc
03	03_POWER.SchDoc
04	04_DEVICE.SchDoc
05	05_USB.SchDoc
06	06_PCle.SchDoc
07	07_SFP.SchDoc
08	08_HDMI_A_IN.SchDoc
09	09_HDMI_B_OUT.SchDoc
10	10_ETH(GE1).SchDoc
11	
12	
13	
14	
15	
16	
17	
18	
19	

Title: ATK-DF7A35P_7A100P V2.5.PrjPCB	
Author: ALIENTEK	Size: A4
Date: 2023/8/30	File: 01_Title.SchDoc
Revision: V2.5	Version:



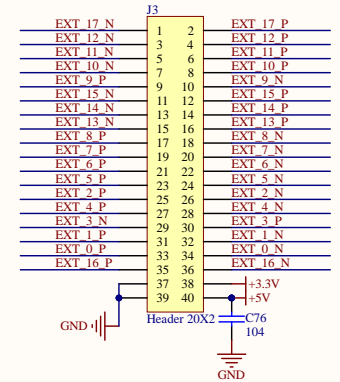
CONNECTOR

PHY1 MDI3 N	J1 59	59	60	J1 60	PHY1 MDI1 N
PHY1 MDI3 P	J1 57	57	58	J1 58	PHY1 MDI1 P
PHY1 MDI2 N	J1 55	55	56	J1 56	PHY1 MDI0 N
PHY1 MDI2 P	J1 53	53	54	J1 54	PHY1 MDI0 P
	J1 51	51	52	J1 52	
PHY_RST_N	B15 L18 P N20	J1 49	49	J1 50	7611 VS
PHY_MDC	B15 L18 N M20	J1 47	48	J1 48	LCD R7
PHY_MDIO	B15 L15 P N22	J1 45	46	J1 46	LCD R6
7611_HS	B15 L15 N M22	J1 43	44	J1 44	LCD R5
7611_DE	B15 L10 P M21	J1 41	42	J1 42	LCD R4
7611_SCL	B15 L10 N L21	J1 39	40	J1 40	LCD R3
7611_SDA	B15 L17 P N18	J1 37	38	J1 38	LCD R2
7611_RST_N	B15 L17 N N19	J1 35	36	J1 36	LCD R1
T_SCK	B15 IO25 M17	J1 33	34	J1 34	LCD R0
T_MISO	B15 L16 P M18	J1 31	32	J1 32	LCD G7
T_PEN	B15 L16 N L18	J1 29	30	J1 30	LCD G6
T_CS	B15 L14 N L20	J1 27	28	J1 28	LCD G5
7611_PCLK	B15 L14 P L19	J1 25	26	J1 26	LCD G4
LCD_DE	B15 L21 P K17	J1 23	24	J1 24	LCD G3
LCD_VSYNC	B15 L21 N J17	J1 21	22	J1 22	LCD G2
LCD_HSYNC	B15 L6 N H18	J1 19	20	J1 20	LCD G1
LCD_CLK	B15 L6 P H17	J1 17	18	J1 18	LCD G0
HDMIB_PCLK_N	B15 L11 N M21	J1 15	16	J1 16	LCD B7
HDMIB_PCLK_P	B15 L11 P M20	J1 13	14	J1 14	LCD B6
HDMIB_FDO_N	B15 L7 N H22	J1 11	12	J1 12	LCD B5
HDMIB_FDO_P	B15 L7 P J22	J1 9	10	J1 10	LCD B4
HDMIB_FDI_N	B15 L9 N K22	J1 7	8	J1 8	LCD B3
HDMIB_FDI_P	B15 L9 P K21	J1 5	6	J1 6	LCD B2
HDMIB_FDI2_N	B15 L8 N G20	J1 3	4	J1 4	LCD B1
HDMIB_FDI2_P	B15 L8 P H20	J1 1	2	J1 2	LCD B0

GND

LCD_RSTIV5	B34 L24 N	Y9 J3 59	59	60	J3 60	LED1	B34 L23 P	Y8
LCD_BLI_V5	B34 L24 P	W9 J3 57	57	58	J3 58	LED2	B34 L23 N	Y7
HDMIB_SDA_LSI_V5	B34 L22 N	AB8J3 55	55	56	J3 56	LED3	B34 L19 N	W7
HDMIB_SCL_LSI_V5	B34 L22 P	AA8J3 53	53	54	J3 54	BEEP IV5	B34 L19 P	V7
LED0	B34 L21 P	V9 J3 51	51	52	J3 52		B34 L20 P	AB7
TPADIV5	B34 L21 N	V8 J3 49	49	50	J3 50		B34 L20 N	AB6
KEY3	B34 L17 N	T6 J3 47	47	48	J3 48	GND		
KEY2	B34 L17 P	R6 J3 45	45	46	J3 46	SFPB_RX_LOSSIV5	B34 L18 N	AA6
KEY1	B34 IO 0	T3 J3 43	43	44	J3 44	SFPB_TX_DISIV5	B34 L18 P	Y6
KEY0	B34 L13 N	T4 J3 41	41	42	J3 42	SFPA_RX_LOSSIV5	B34 L16 P	U6
GND		J3 39	39	40	J3 40	SFPA_TX_DISIV5	B34 L16 N	V5
PGFA_TCK		J3 37	37	38	J3 38	GND		
PGFA_TDO		J3 35	35	36	J3 36	XADC_VN	XADC_VN	M9
PGFA_TMS		J3 33	33	34	J3 34	XADC_VP	XADC_VP	L10
PGFA_TDI		J3 31	31	32	J3 32	GND		
GND		J3 29	29	30	J3 30	GND		
SFPB_RD_P	MGT_RX1_P	D11J3 27	27	28	J3 28	SFPB_TD_P	MGT_TX1_P	D5
SFPB_RD_N	MGT_RX1_N	C11J3 25	25	26	J3 26	SFPB_TD_N	MGT_TX1_N	C5
GND		J3 23	23	24	J3 24	GND		
SFPA_RD_P	MGT_RX0_P	B8 J3 21	21	22	J3 22	SFPA_TD_P	MGT_TX0_P	B4
SFPA_RD_N	MGT_RX0_N	A8 J3 19	19	20	J3 20	SFPA_TD_N	MGT_TX0_N	A4
GND		J3 17	17	18	J3 18	GND		
MGT_CLK1_P	MGT_CLK1_P	F10J3 15	15	16	J3 16	MGT_CLK0_P	MGT_CLK0_P	E6
MGT_CLK1_N	MGT_CLK1_N	E10J3 13	13	14	J3 14	PCIE_CLK_N	MGT_CLK0_N	E6
GND		J3 11	11	12	J3 12	GND		
PCIE_RX0_P	MGT_RX3_P	D9 J3 9	9	10	J3 10	PCIE_TX0_P	MGT_TX3_P	D7
PCIE_RX0_N	MGT_RX3_N	C9 J3 7	7	8	J3 8	PCIE_TX0_N	MGT_TX3_N	C7
GND		J3 5	5	6	J3 6	GND		
PCIE_RX1_P	MGT_RX2_P	B10 J3 3	3	4	J3 4	PCIE_TX1_P	MGT_TX2_P	B6
PCIE_RX1_N	MGT_RX2_N	A10 J3 1	1	2	J3 2	PCIE_TX1_N	MGT_TX2_N	A6

EXT IO



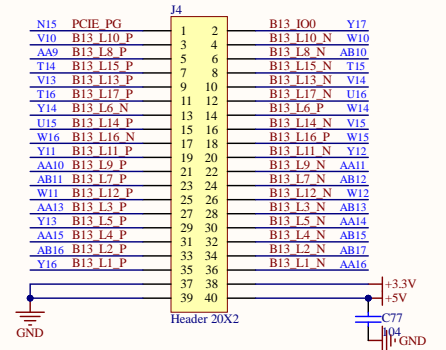
HDMIB_HPD	B16 L22 N	D22 J2 79	79	80	J2 80	USBSBSS_OE	B16 L14 N	D19
USBSBSS_D7	B16 L22 P	D22 J2 77	77	78	J2 78	USBSBSS_D6	B16 IO25	F21
USBSBSS_D5	B16 L23 N	D21 J2 75	75	76	J2 76	USBSBSS_D4	B16 L23 P	D21
USBSBSS_D3	B16 L15 N	E18 J2 71	71	72	J2 72	USBSBSS_D2	B16 L15 P	F18
USBSBSS_D1	B16 IO0	F15 J2 65	65	66	J2 66	GND		
USBSBSS_D0	B16 L12 N	C17 J2 61	61	62	J2 62	UART1_TXD	B16 L12 P	D17
UART1_TXD	B16 L12 P	D17 J2 59	59	60	J2 60	UART2_TXD	B16 L5 N	D16
GBC_KEY	B16 L5 P	E16 J2 55	55	56	J2 56	EXT 0 P	B16 L6 P	D14
EXT 0 N	B16 L6 N	D15 J2 53	53	54	J2 54	EXT 1 N	B16 L21 N	A21
EXT 1 P	B16 L21 P	B21 J2 47	47	48	J2 48	EXT 2 N	B16 L16 N	A20
EXT 2 N	B16 L16 N	A20 J2 45	45	46	J2 46	EXT 2 P	B16 L16 P	B20
EXT 2 P	B16 L16 P	B20 J2 43	43	44	J2 44	HIC1_SDA	B16 L17 N	A19
HIC1_SDA	B16 L17 N	A19 J2 41	41	42	J2 42	TF_CD	B16 L17 P	A18
TF_CD	B16 L17 P	A18 J2 39	39	40	J2 40	TF_DAT1	B16 L11 N	B18
TF_DAT1	B16 L11 N	B18 J2 37	37	38	J2 38	TF_DAT0	B16 L11 P	B17
TF_DAT0	B16 L11 P	B17 J2 35	35	36	J2 36	TF_CLK	B16 L9 N	A16
TF_CLK	B16 L9 N	A16 J2 31	31	32	J2 32	TF_CMD	B16 L9 P	A15
TF_CMD	B16 L9 P	A15 J2 29	29	30	J2 30	TF_DAT3	B16 L10 N	A14
TF_DAT3	B16 L10 N	A14 J2 27	27	28	J2 28	TF_DAT2	B16 L10 P	A13
TF_DAT2	B16 L10 P	A13 J2 25	25	26	J2 26	GND		
GND		J2 23	23	24	J2 24	B35 IO 25	L6	J2 23
B35 IO 25	L6	J2 21	21	22	J2 22	B35 L13 P	K4	J2 21
B35 L13 P	K4	J2 19	19	20	J2 20	GND		
GND		J2 17	17	18	J2 18	GND		
GND		J2 15	15	16	J2 16	GND		
GND		J2 13	13	14	J2 14	GND		
GND		J2 11	11	12	J2 12	GND		
GND		J2 9	9	10	J2 8			
GND		J2 7	7	8	J2 6			
GND		J2 5	5	6	J2 4			
GND		J2 3	3	4	J2 2			
GND		J2 1	1	2				

A7_CORE

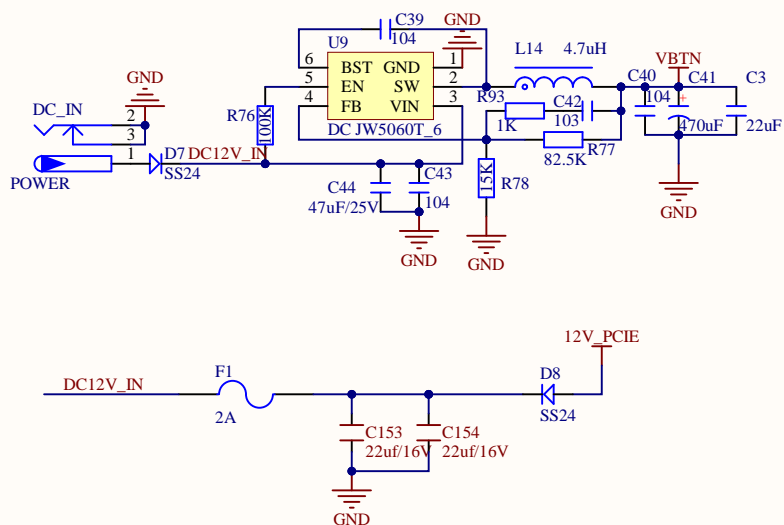
ENET1_ACT	PHY1_AD1/LED1	J4 79	79	80	J4 80	GND		
LED1_1000	PHY1_AD2/LED2	J4 77	77	78	J4 78	RGMIIL_RXD3	B14 L13 N	Y19
RGMIIL_TXCTL	B14 L12 N	W20 J4 75	75	76	J4 76	RGMIIL_RXC	B14 L13 P	Y18
RGMIIL_TXC	B14 L12 P	W19 J4 73	73	74	J4 74	RGMIIL_RXD2	B14 L10 N	AB22
RGMIIL_TXD0	B14 L7 N	W22 J4 71	71	72	J4 72	RGMIIL_RXD1	B14 L10 P	AB21
RGMIIL_TXD1	B14 L7 P	W21 J4 69	69	70	J4 70	RGMIIL_RXD0	B14 L9 N	Y22
RGMIIL_TXD2	B14 L6 N	T20 J4 67	67	68	J4 68	RGMIIL_RXCTL	B14 L9 P	Y21
RGMIIL_TXD3	B14 IO0	P20 J4 65	65	66	J4 66	GND		
RS485_RX	B14 L20 N	T18 J4 63	63	64	J4 64	CAN_TX	B14 L15 N	AB20
RS485_TX	B14 L20 P	R18 J4 61	61	62	J4 62	CAN_RX	B14 L15 P	AA19
CMOS_D3_N	B14 L24 N	R17 J4 59	59	60	J4 60	EXT 13 N	B14 L17 N	AR18
CMOS_D4_P	B14 L24 P	P16 J4 57	57	58	J4 58	EXT 13 P	B14 L17 P	AA18
CMOS_D2	B14 L22 N	R16 J4 55	55	56	J4 56	EXT 14 N	B14 L18 N	U18
CMOS_D1	B14 L22 P	P15 J4 53	53	54	J4 54	EXT 14 P	B14 L18 P	U17
CMOS_D0	B14 L21 N	P17 J4 51	51	52	J4 52	EXT 15 N	B14 L16 N	W17
CMOS_RESET	B14 L21 P	N17 J4 49	49	50	J4 50	EXT 15 P	B14 L16 P	V17
CMOS_SDA	B14 L19 N	R14 J4 47	47	48	J4 48	GND		
CMOS_VSYNC	B14 L19 P	P14 J4 45	45	46	J4 46	GND		
PCIE_PG	B14 IO25	N15 J4 43	43	44	J4 44	B13 IO0		
CMOS_HREF	B14 L23 N	N14 J4 41	41	42	J4 42	B13 L2 N	AB17	
CMOS_SCL	B14 L23 P	N13 J4 39	39	40	J4 40	B13 L2 P	AB16	
	B13 L16 P	W15 J4 37	37	38	J4 38	B13 L1 N	AA16	
	B13 L16 N	W16 J4 35	35	36	J4 36	B13 L1 P	Y16	
	B13 L14 N	V15 J4 33	33	34	J4 34	B13 L4 N	AB15	
	B13 L14 P	U15 J4 31	31	32	J4 32	B13 L4 P	AA15	
	B13 L6 P	W14 J4 29	29	30	J4 30	B13 L5 N	AA14	
	B13 L6 N	Y14 J4 27	27	28	J4 28	B13 L5 P	Y13	
	B13 L7 N	U16 J4 25	25	26	J4 26	B13 L3 N	AB13	
	B13 L7 P	T16 J4 23	23	24	J4 24	B13 L3 P	AA13	
	B13 L3 N	V14 J4 21	21	22	J4 22	B13 L12 N	W12	
	B13 L3 P	V13 J4 19	19	20	J4 20	B13 L12 P	W11	
	B13 L5 N	T15 J4 17	17	18	J4 18	B13 L7 N	AB12	
	B13 L5 P	T14 J4 15	15	16	J4 16	B13 L7 P	AB11	
	B13 L8 N	AB10J4 13	13	14	J4 14	B13 L9 N	AA11	
	B13 L8 P	AA9 J4 11	11	12	J4 12	B13 L9 P	AA10	
	B13 L10 N	W10 J4 9	9	10	J4 10	B13 L11 N	Y12	
	B13 L10 P	V10 J4 7	7	8	J4 8	B13 L11 P	Y11	
		J4 5	5	6	J4 4			
		J4 3	3	4	J4 2			
		J4 1	1	2				

GND

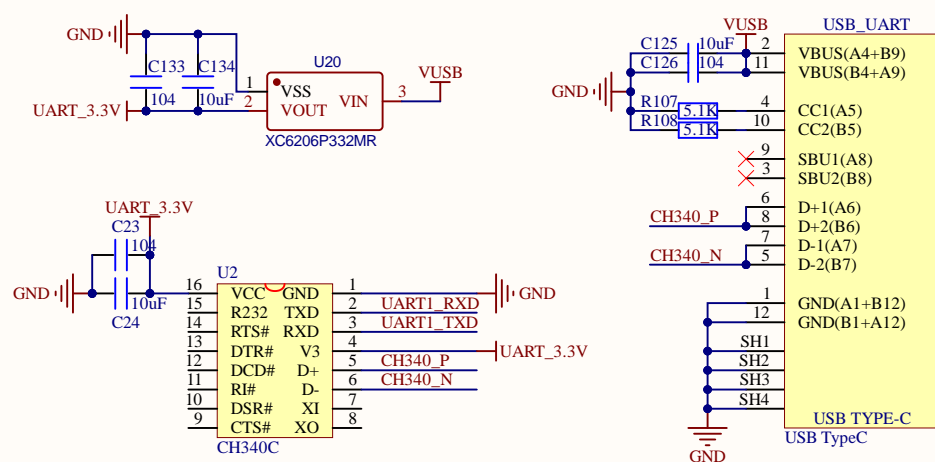
GND



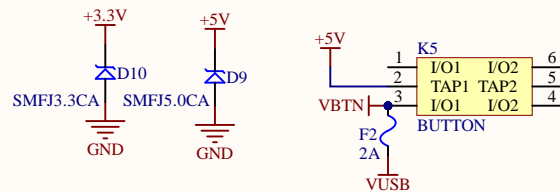
DC-DC POWER IN



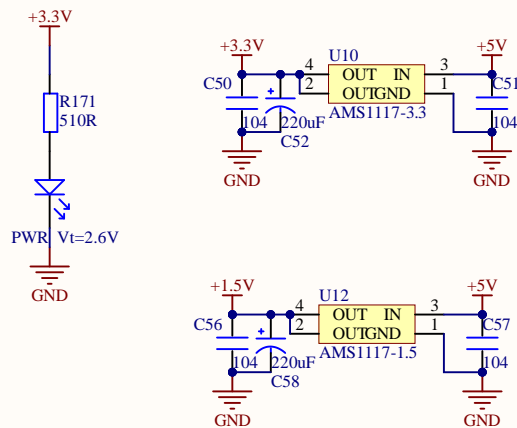
USB UART&USB POWER



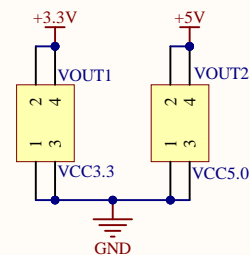
POWER SWITCH



1.5V/3.3V POWER



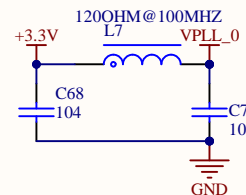
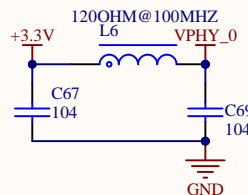
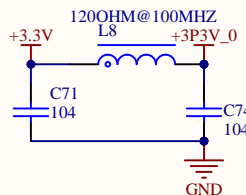
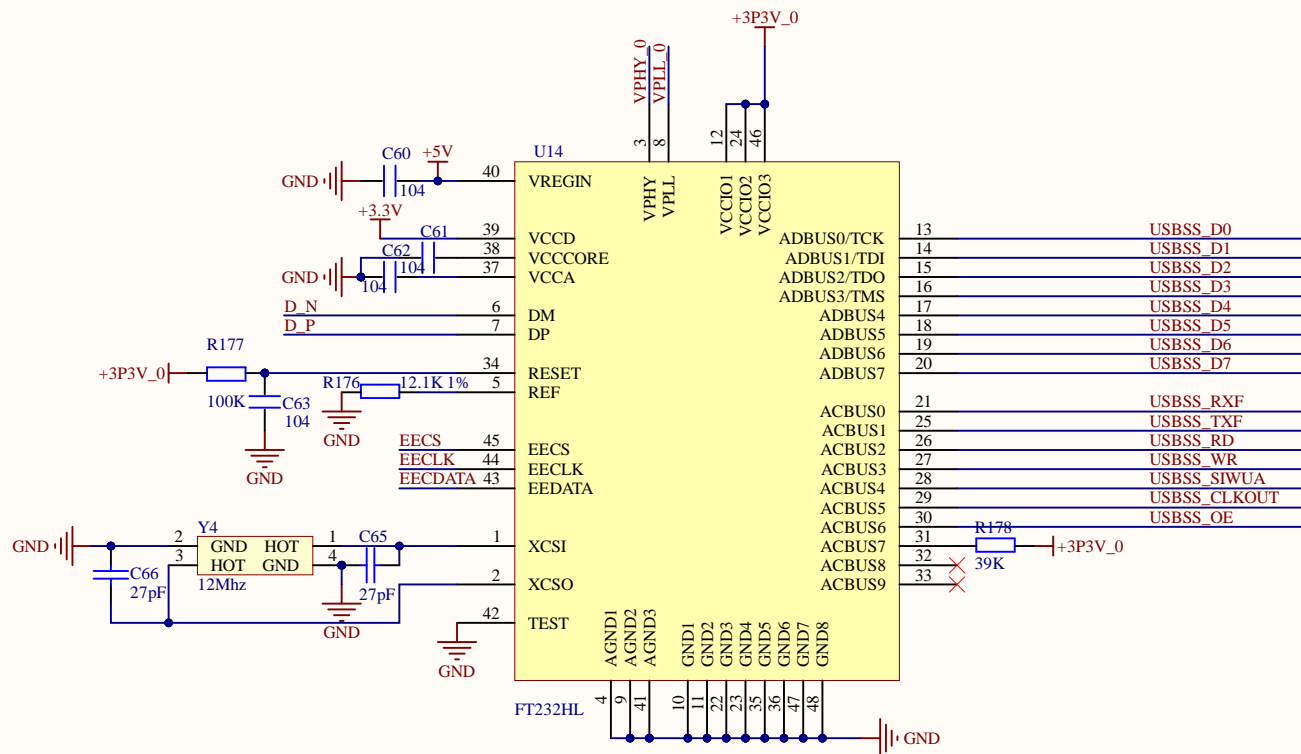
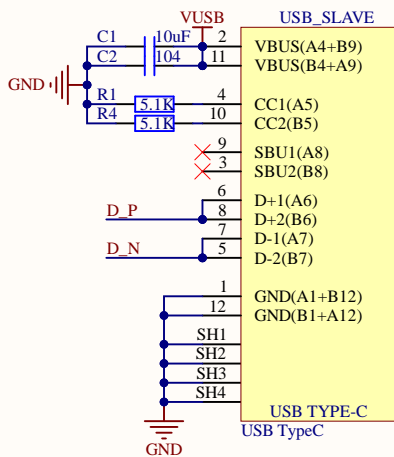
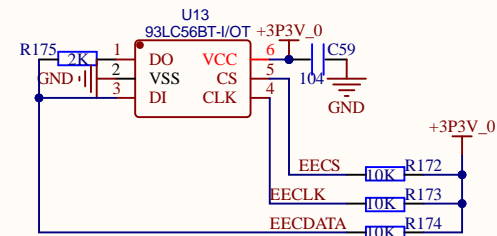
ON BOARD POWER SOURCE



Title:	ATK-DF7A35P_7A100P V2.5.PrjPCB
Author:	Size: A4
ALIENTEK	
Date:	File:
2023/8/30	03_POWER.SchDoc
Revision:	Version:
V2.5	



USB2.0 Slave

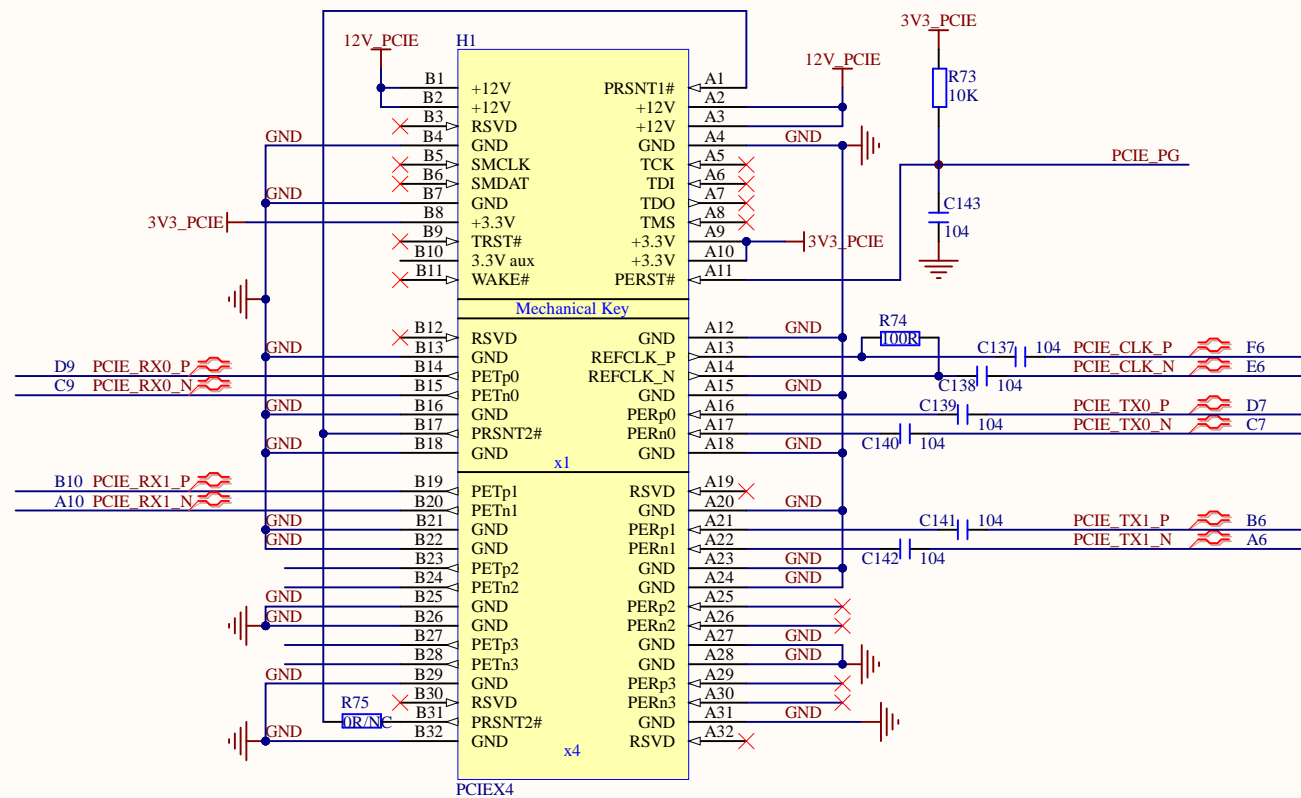


Title:
ATK-DF7A35P_7A100P V2.5.PrjPCB
Author:
ALIENTEK
Date:
2023/8/30
Revision:
V2.5

Size:
A4
File:
05_USB.SchDoc
Version:



PCIe



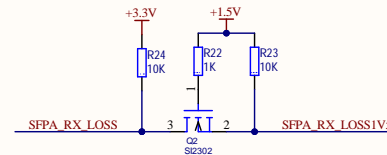
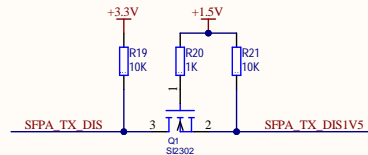
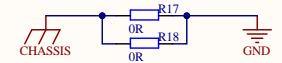
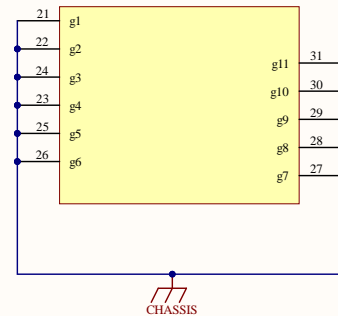
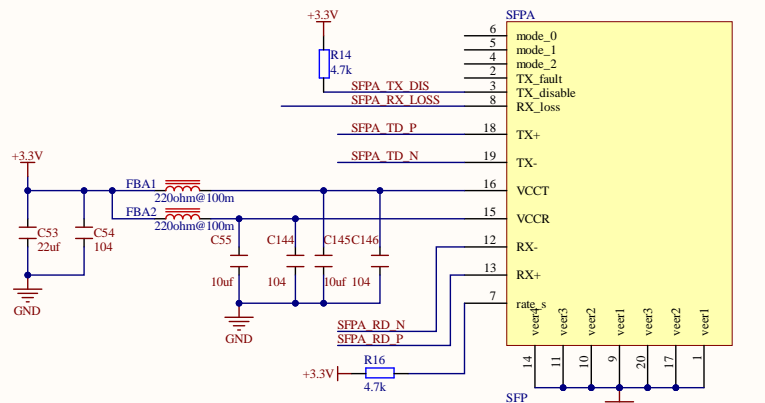
Title:
ATK-DF7A35P_7A100P V2.5.PrjPCB
Author:
ALIENTEK
Date:
2023/8/30
Revision:
V2.5

Size:
A4
File:
06_PCIe.SchDoc
Version:

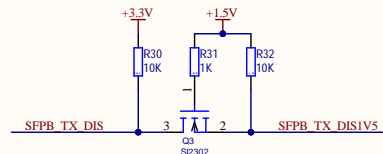
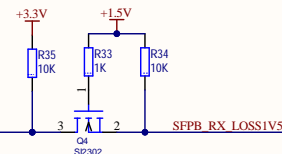
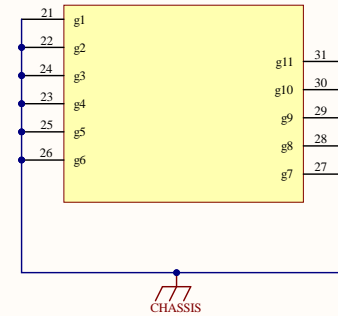
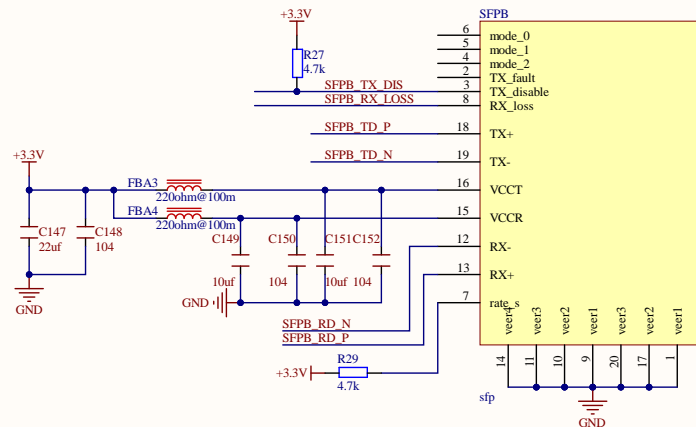
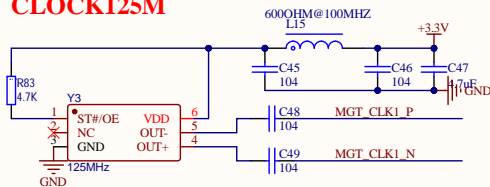


正点原子

SFP



CLOCK125M



Title:		ATK-DF7A35P_7A100P V2.5.PriPCB
Author:	Size:	A3
Date:	File:	07_SFP.SchDoc
Revision:	Version:	V2.5



A



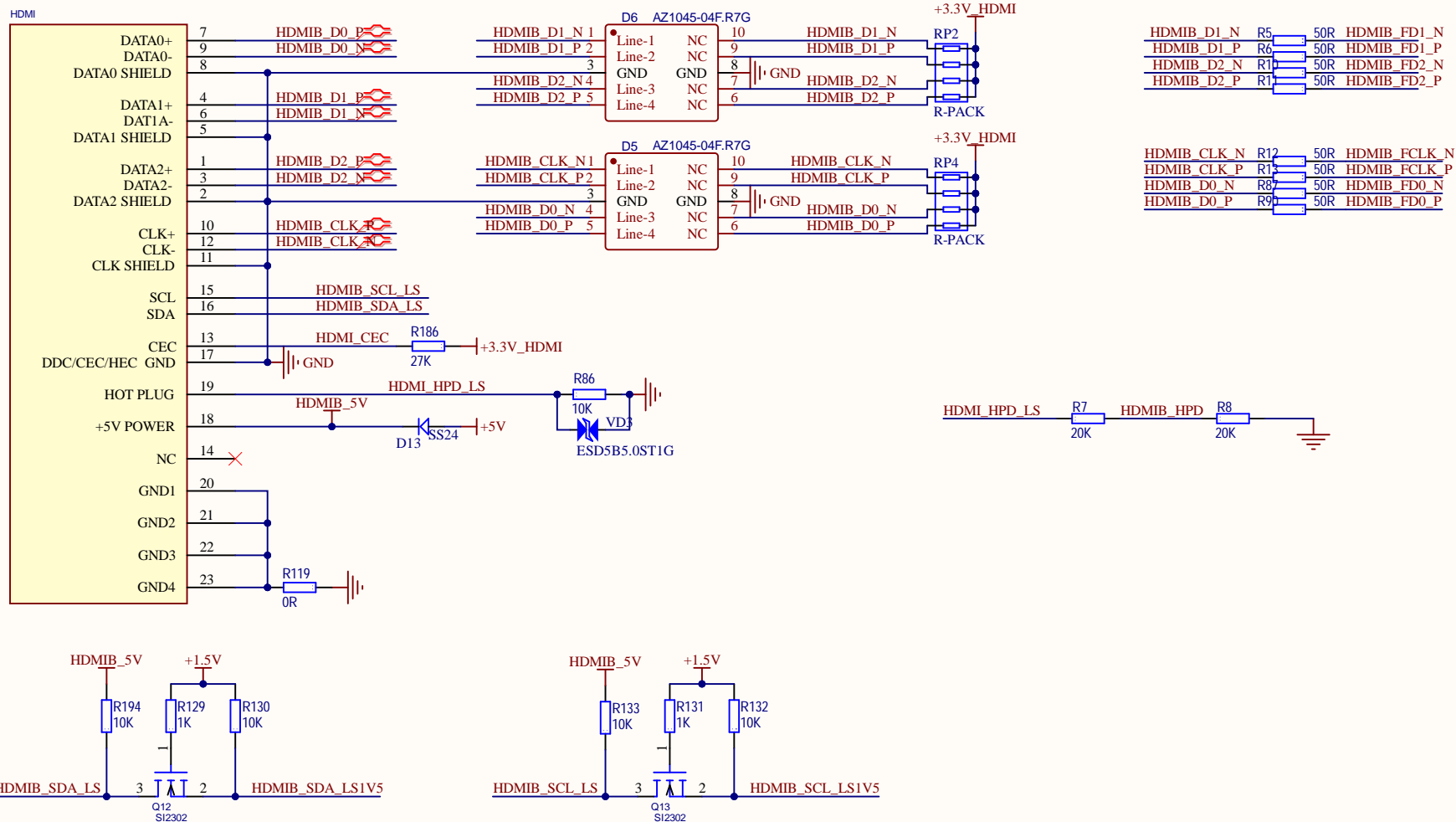
C


D



正点原子

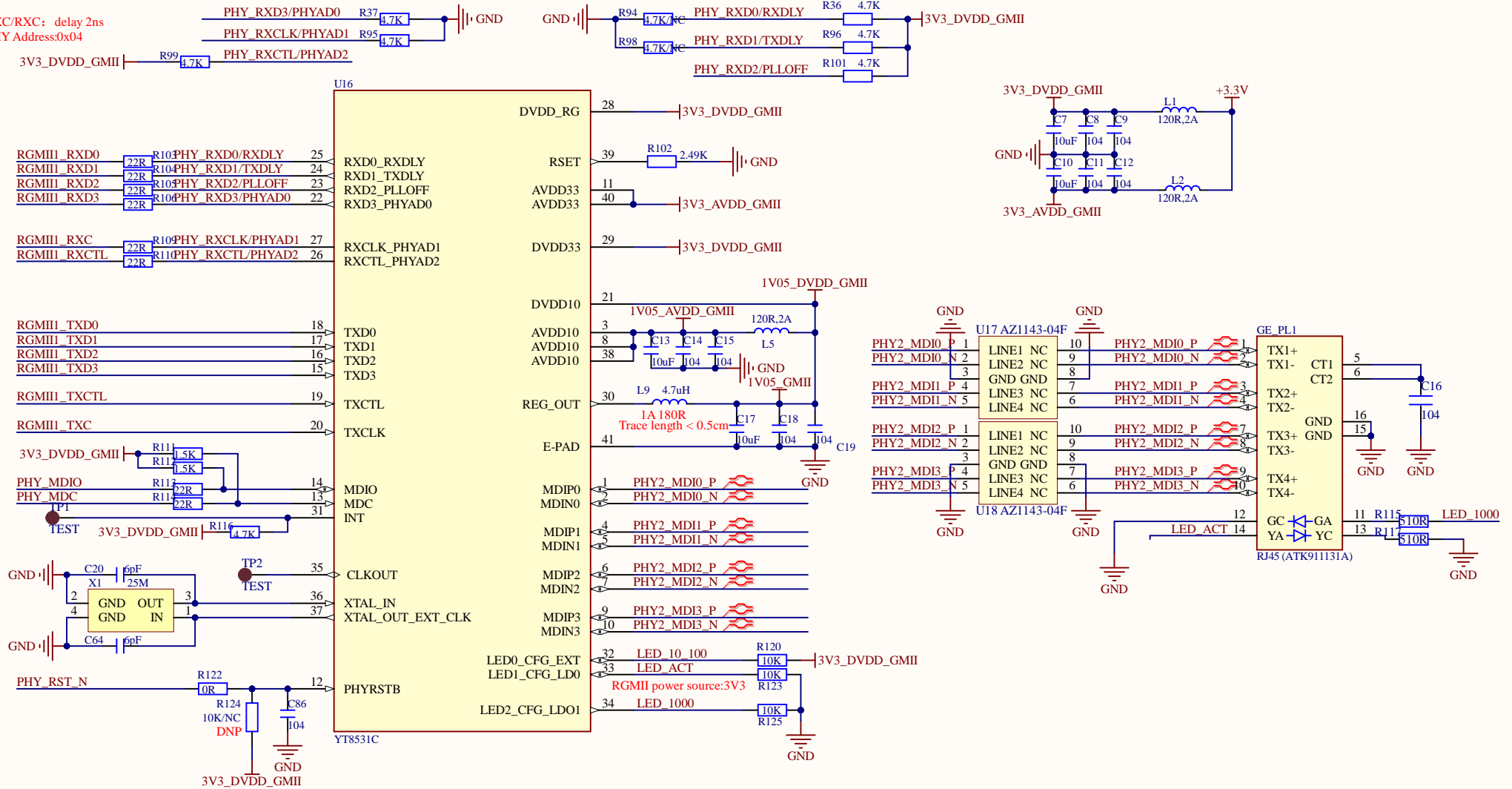
HDMI_B OUT



Title: ATK-DF7A35P_7A100P V2.5.PrjPCB		 正点原子
Author: ALIENTEK	Size: A4	
Date: 2023/8/30	File: 09_HDMI_B_OUT.SchDoc	
Revision: V2.5	Version:	

正点原子

TXC/RXC: delay 2ns
PHY Address:0x04



Title: ATK-DF7A35P_7A100P V2.5.PrjPCB	
Author: ALIENTEK	Size: A4
Date: 2023/8/30	File: 10_ETH(GE1).SchDoc
Revision: V2.5	Version:



